



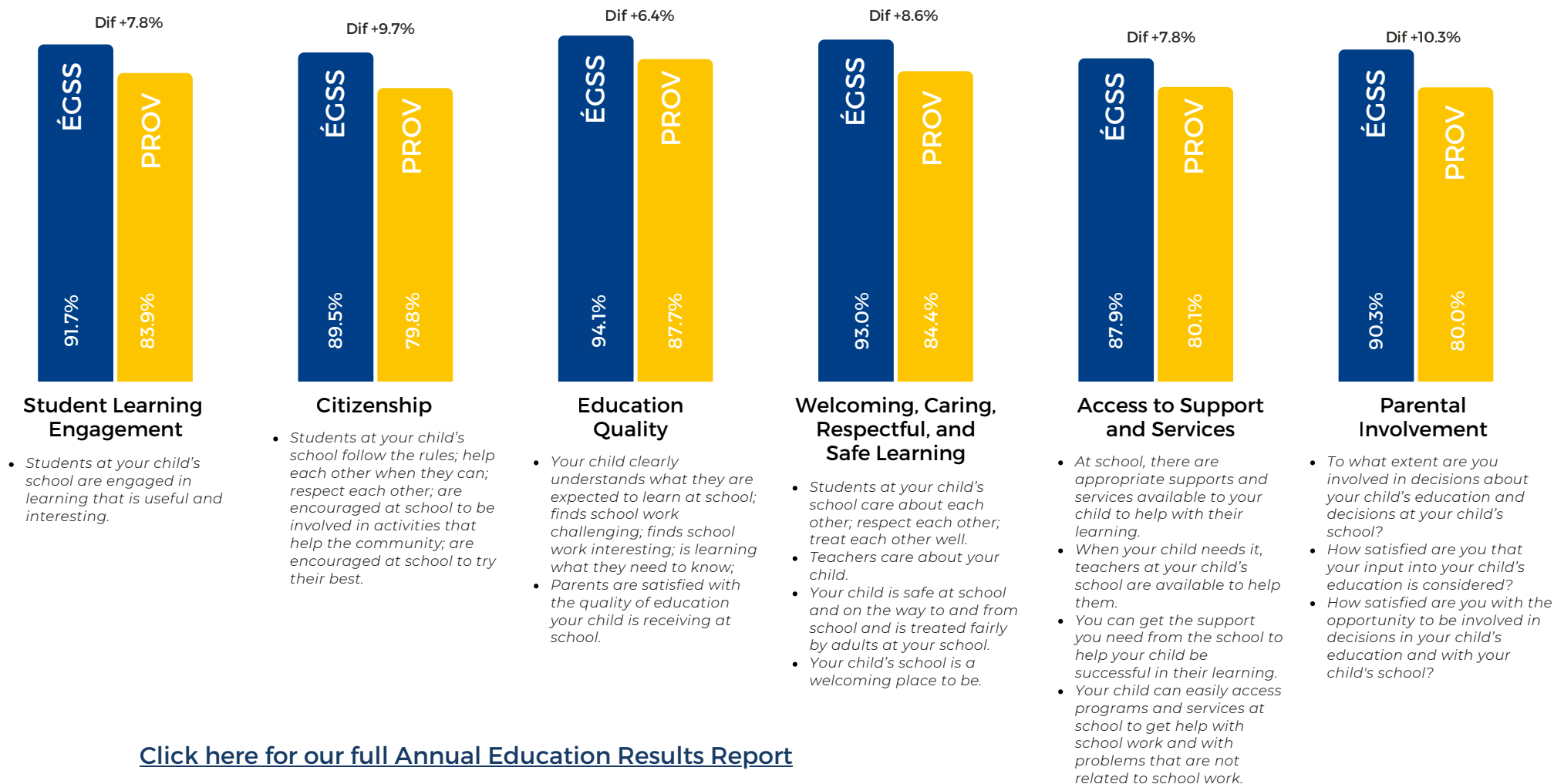
2024-2025

annual education results report

An Overview of Our Performance

ALBERTA ASSURANCE ANNUAL EDUCATION RESULTS

Alberta Education Assurance is a set of 12 performance measures calculated by Alberta Education for schools and school boards across the province. Schools and school boards are evaluated based on achievement, improvement, and overall performance.



Faith Survey Results

- 95%** Percentage of students, parents, and teachers who indicate that they are satisfied with the relationship that exists between the school and the local Catholic parish.
- 98%** Percentage of students, parents and teachers who are satisfied with the religious celebrations that are celebrated with the school.
- 97%** Percentage of students, parents and teachers who are satisfied with what is being taught in religious education classes.
- 98%** Percentage of students, parents and teachers who indicate they are satisfied with the level of Catholic faith formation of students at the school.
- 92%** Percentage of students, parents and teachers who indicate they are satisfied with the efforts to live our Catholic Social Teaching at school.

Insight:

Deeply Rooted in Faith: Our faith formation is exceptional, led by dedicated Faith Lead Teachers who support both student and staff spiritual growth. This commitment yields outstanding results: 99% overall satisfaction from students, staff, and parents regarding our faith environment.

Insights

- Excellence Across the Board:** ÉGSS consistently surpasses provincial standards. We achieved 'Very High' or 'High' results in every category of the assurance measures, demonstrating comprehensive overall excellence.
- A True Community Partnership:** Parental involvement is a key strength at ÉGSS. Satisfaction in our collaborative home-school environment continues to climb, with overall parental satisfaction rates exceeding 90%.
- Unwavering Academic Success:** Our focus on foundational literacy skills drives success: 100% of students who wrote the Grade 6 English Language Arts and Literature (ELAL) Provincial Achievement Test (PAT) achieved the acceptable standard.